

WINTTECH

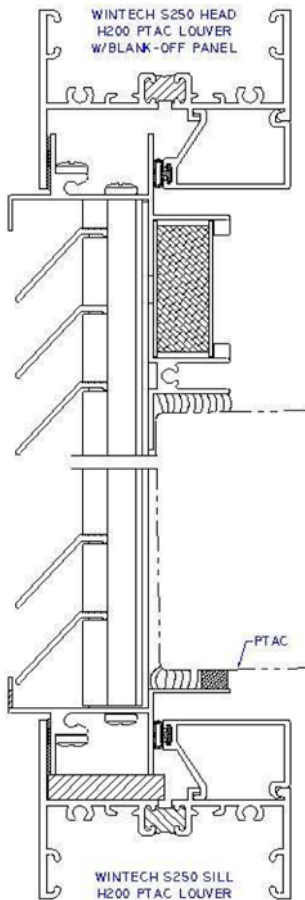
AN EMPLOYEE OWNED COMPANY

H200 PTAC Louver



- Available options:
 - Glazed in, hang on and architectural.
 - The only PTAC Louver with an integral sealing PTAC sleeve flange for ultimate water prevention.
- Best lead time in the industry.
- Installs into any window system with 1" glazing pocket.
- Adjustable struts and sleeve attachment (manufactured to PTAC manufacturing recommendations).
- Multiple finish options:
 - Anodize, AAMA 2603, 2604, and 2605, baked enamel, powder coat, kynar paint.
 - Standard colors and custom color match available.
- Reduce labor and cost with our fully manufactured, ready to install **H200 Louver System**.

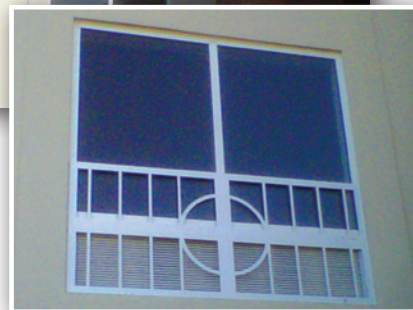
***Make WinTech your choice for all your louver needs.
You will be glad that you did!***



- **Independently Tested and Certified:**
FTL Report#: 10-2093
Tested to: ASTM E330 & TAS 202,
+/- 75 DP; +/- 112.5 DP Uniform
- **H200I Impact Tested and Certified:**
QCT Report#: QCT11-2263.01
Tested to: ASTM E330 & ASTM 1886
+/- 75 DP (Structural and Cycling).
ASTM 1996: Level D, 2 Impacts
- **Florida Approval Number: 15029**

- **Keystone Certified:**
Certification Authorization
Report #:
872-101 and 872-201

- **Decorative Exterior Grills**
- **Custom Designs to Fit Your Needs**



For more information, please contact us today - we are here to help you!

