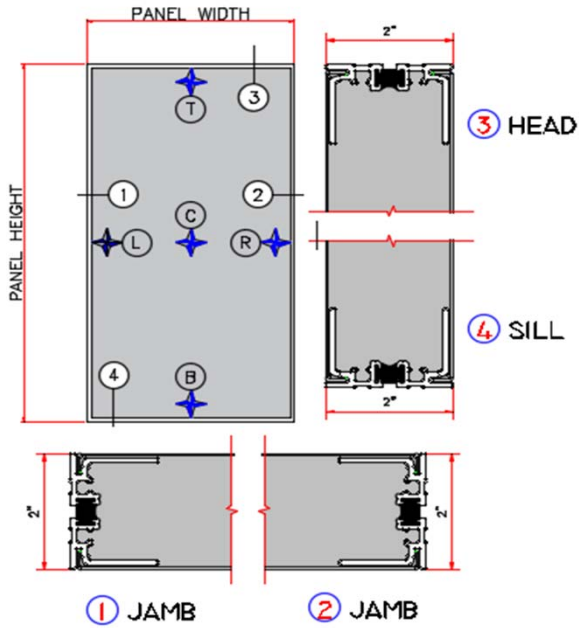
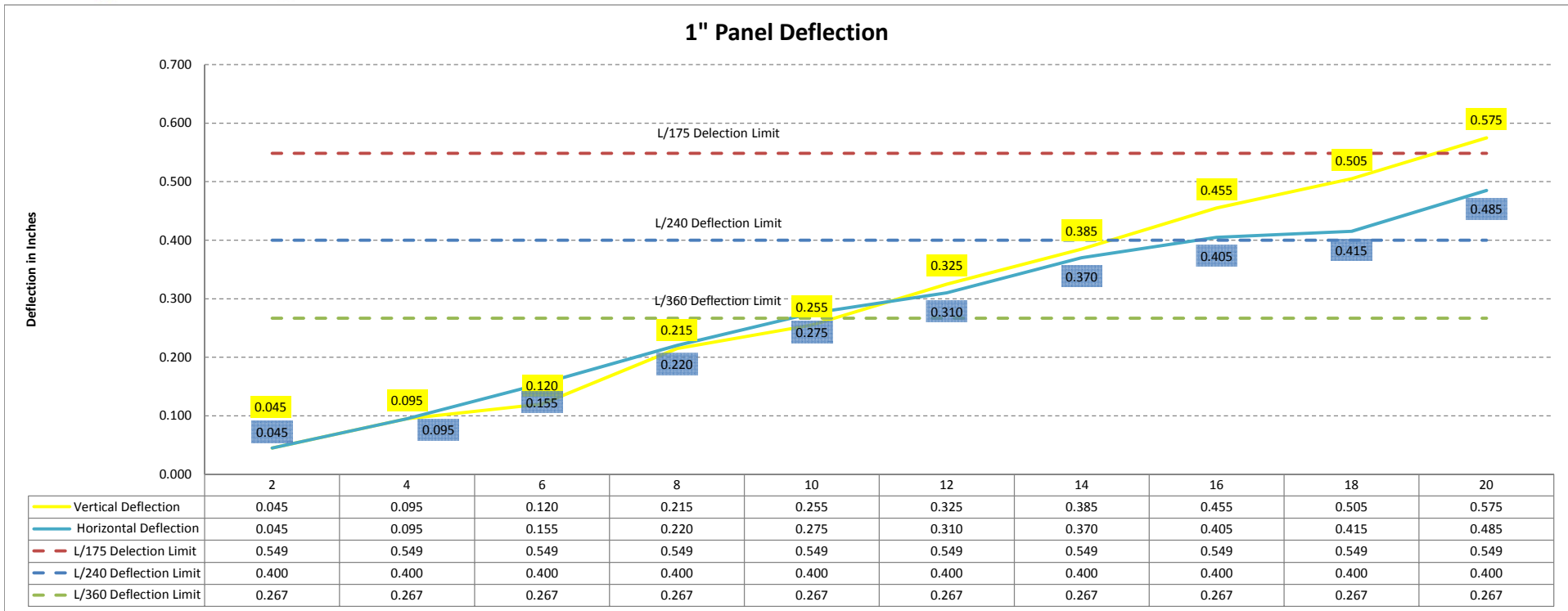


1" Panel Deflection Numbers



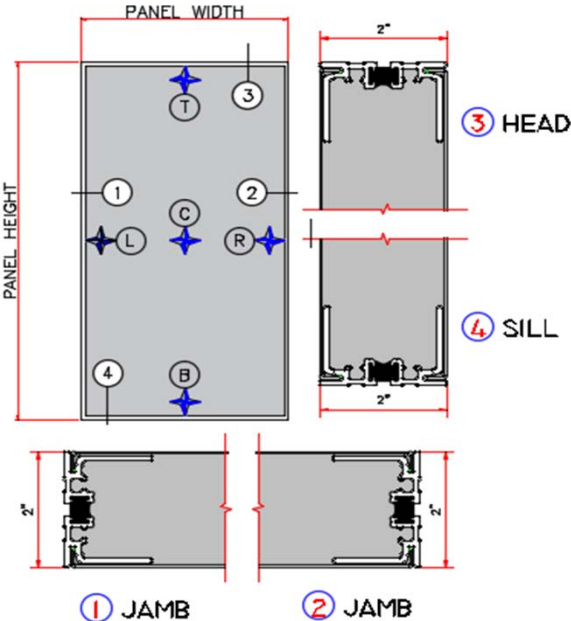
Panel Size Pressure (Inches W.C.)	Width		Heigh	0					Vertical Deflection
	L	C	R	Horizontal Deflection	T	C	B		
2	0.04	0.08	0.03	0.045	0.01	0.06	0.02	0.045	
4	0.08	0.16	0.05	0.095	0.03	0.14	0.06	0.095	
6	0.11	0.24	0.06	0.155	0.06	0.21	0.12	0.120	
8	0.13	0.33	0.09	0.220	0.07	0.31	0.12	0.215	
10	0.14	0.4	0.11	0.275	0.09	0.37	0.14	0.255	
12	0.16	0.46	0.14	0.310	0.09	0.44	0.14	0.325	
14	0.17	0.53	0.15	0.370	0.1	0.51	0.15	0.385	
16	0.17	0.57	0.16	0.405	0.11	0.59	0.16	0.455	
18	0.17	0.58	0.16	0.415	0.13	0.66	0.18	0.505	
20	0.19	0.67	0.18	0.485	0.13	0.74	0.2	0.575	

Deflect Limit	
L/175	0.55
L/240	0.40
L/360	0.27



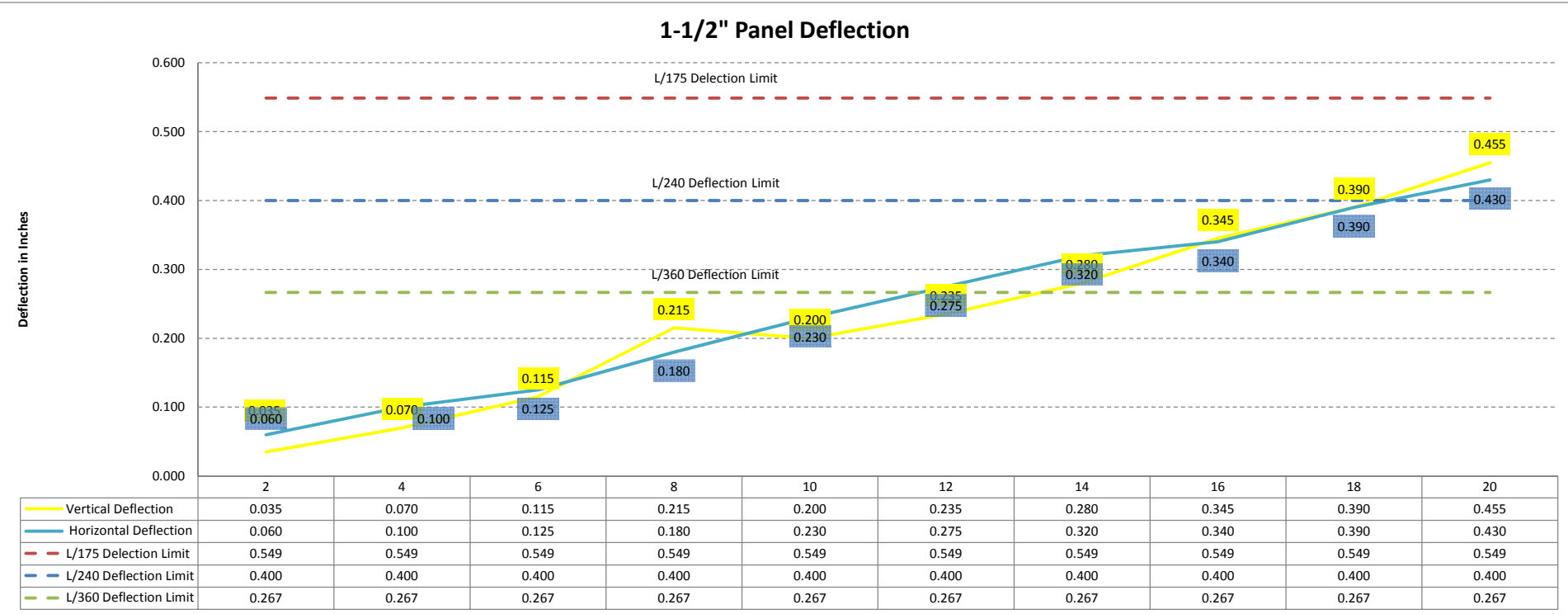
Units were tested 20 gauge galvanized skins on both sides
 Units used E-648 extrusions in mill finish
 Panels were tested at WinTech on 4-27-17

1-1/2" Panel Deflection Numbers



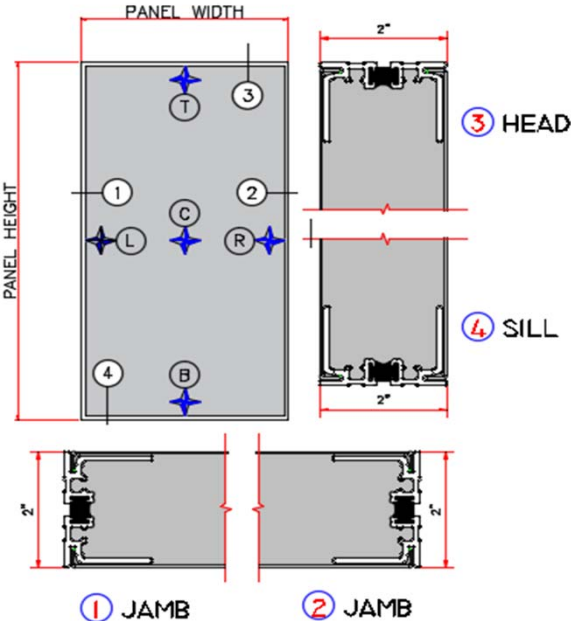
Panel Size Pressure (Inches W.C.)	Width		Heighth	Horizontal Deflection				Vertical Deflection
	L	C	R	T	C	B		
0								
2	0.01	0.07	0.01	0.060	0.01	0.05	0.02	0.035
4	0.03	0.13	0.03	0.100	0.03	0.11	0.05	0.070
6	0.05	0.18	0.06	0.125	0.03	0.16	0.06	0.115
8	0.05	0.24	0.07	0.180	0.04	0.27	0.07	0.215
10	0.07	0.3	0.07	0.230	0.04	0.26	0.08	0.200
12	0.08	0.36	0.09	0.275	0.04	0.31	0.11	0.235
14	0.08	0.41	0.1	0.320	0.05	0.37	0.13	0.280
16	0.12	0.46	0.12	0.340	0.07	0.46	0.16	0.345
18	0.12	0.51	0.12	0.390	0.08	0.52	0.18	0.390
20	0.13	0.56	0.13	0.430	0.08	0.59	0.19	0.455

Deflect Limit	
L/175	0.55
L/240	0.40
L/360	0.27



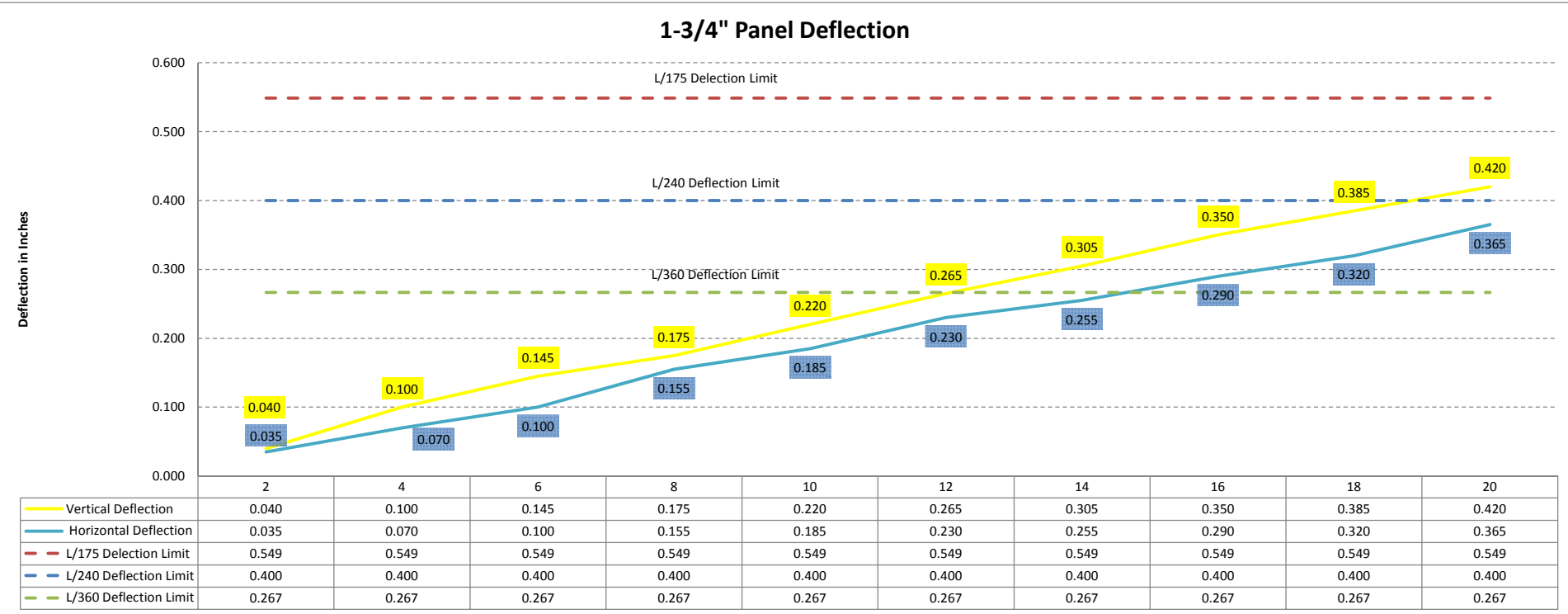
Units were tested 20 gauge galvanized skins on both sides
 Units used E-687 extrusions in mill finish
 Panels were tested at WinTech on 4-27-17

1-3/4" Panel Deflection Numbers



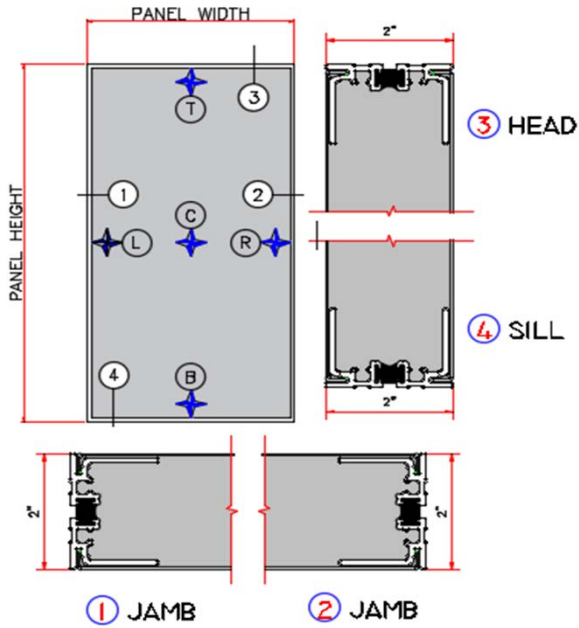
Panel Size Pressure (Inches W.C.)	Width		Height	Horizontal Deflection				Vertical Deflection
	L	C	R	T	C	B		
0								
2	0.02	0.06	0.03	0.035	0.01	0.05	0.040	
4	0.04	0.12	0.06	0.070	0.01	0.11	0.100	
6	0.07	0.17	0.07	0.100	0.02	0.17	0.145	
8	0.08	0.23	0.07	0.155	0.03	0.21	0.175	
10	0.09	0.28	0.1	0.185	0.04	0.26	0.220	
12	0.11	0.34	0.11	0.230	0.06	0.32	0.265	
14	0.13	0.38	0.12	0.255	0.06	0.36	0.305	
16	0.16	0.43	0.12	0.290	0.06	0.41	0.350	
18	0.17	0.47	0.13	0.320	0.07	0.45	0.385	
20	0.18	0.52	0.13	0.365	0.07	0.49	0.420	

Deflect Limit	
L/175	0.55
L/240	0.40
L/360	0.27



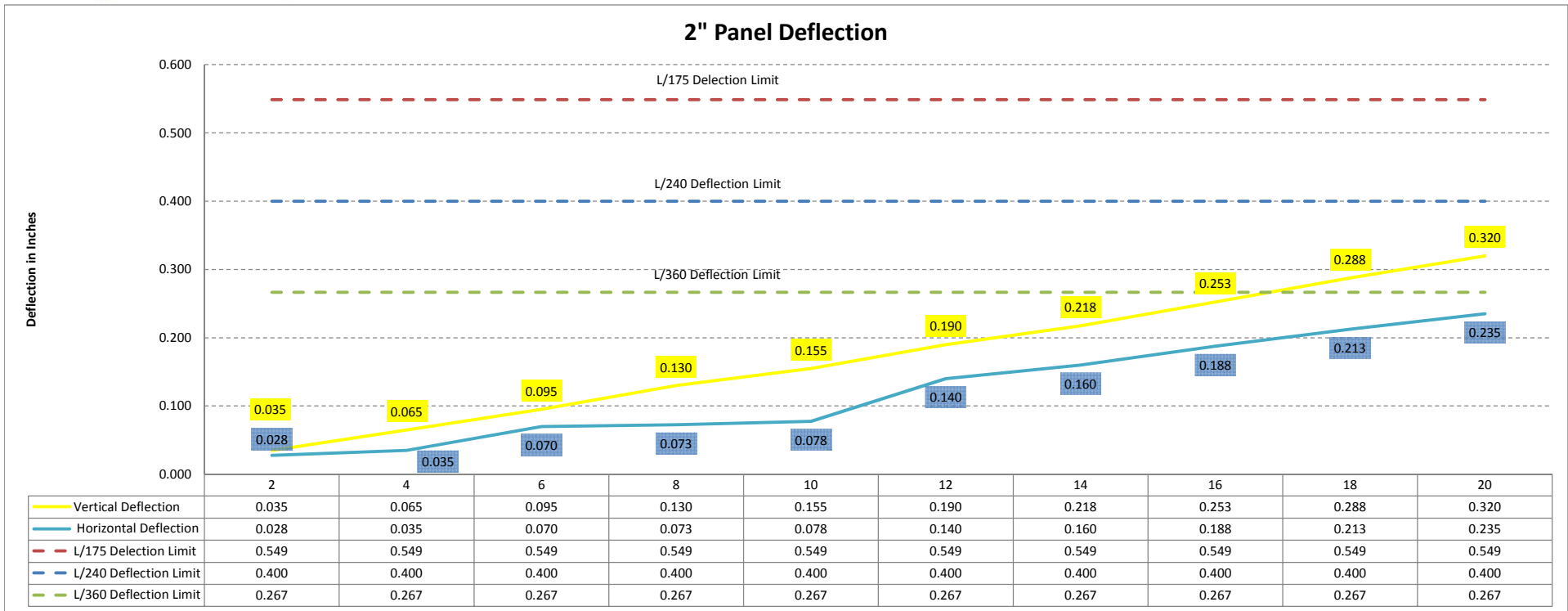
Units were tested 20 gauge galvanized skins on both sides
 Units used E-688 extrusions in mill finish
 Panels were tested at WinTech on 4-27-17

2" Panel Deflection Numbers



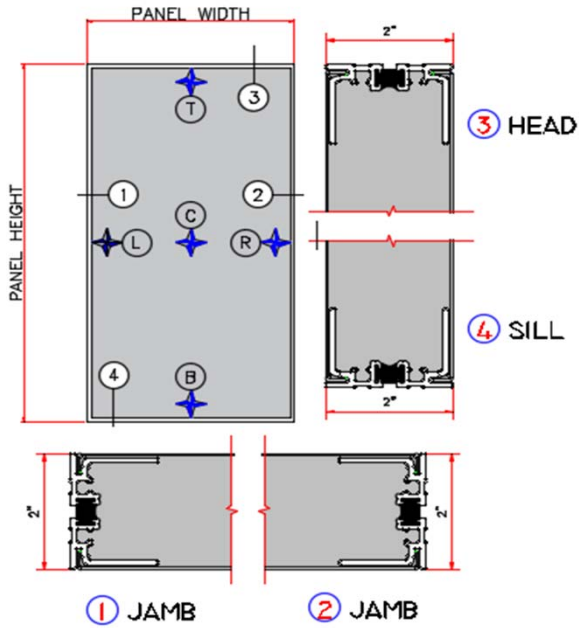
Panel Size Pressure (Inches W.C.)	Width		Height		Horizontal Deflection				Vertical Deflection
	48	96	L	C	R	T	C	B	
0									
2	0.015	0.04	0.01	0.028	0	0.035	0	0.035	
4	0.03	0.06	0.02	0.035	0	0.07	0.01	0.065	
6	0.045	0.105	0.025	0.070	0.01	0.11	0.02	0.095	
8	0.06	0.12	0.035	0.073	0.01	0.15	0.03	0.130	
10	0.07	0.135	0.045	0.078	0.01	0.18	0.04	0.155	
12	0.07	0.2	0.05	0.140	0.01	0.22	0.05	0.190	
14	0.08	0.23	0.06	0.160	0.015	0.25	0.05	0.218	
16	0.085	0.265	0.07	0.188	0.015	0.29	0.06	0.253	
18	0.09	0.295	0.075	0.213	0.02	0.33	0.065	0.288	
20	0.1	0.325	0.08	0.235	0.02	0.365	0.07	0.320	

Deflect Limit	
L/175	0.55
L/240	0.40
L/360	0.27



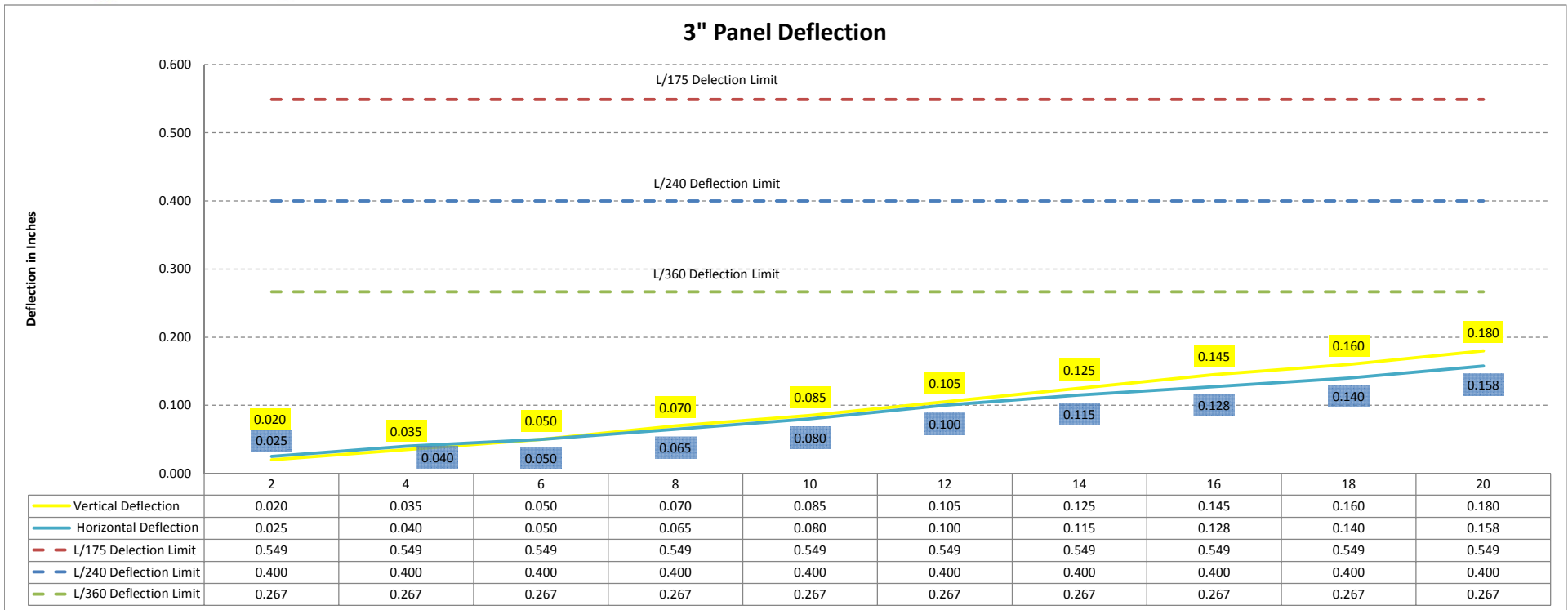
Units were tested 20 gauge galvanized skins on both sides
 Units used E-675 extrusions in mill finish
 Panels were tested at WinTech on 6-22-16 and 6-24-16

3" Panel Deflection Numbers



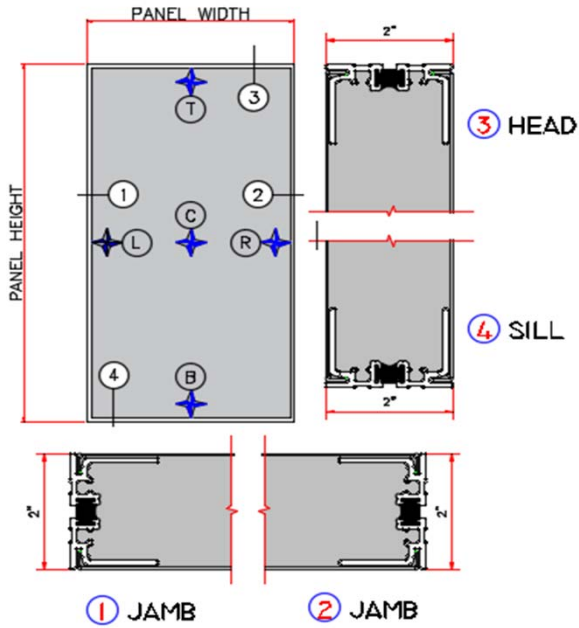
Panel Size Pressure (Inches W.C.)	Width		Height		Horizontal Deflection				Vertical Deflection	
	48	96	0		L	C	T	B		
2			0		0.01	0.03	0	0	0.02	0.020
4			0		0.02	0.05	0.01	0	0.04	0.035
6			0.01		0.03	0.07	0.02	0	0.06	0.050
8			0.01		0.04	0.09	0.02	0	0.08	0.070
10			0.01		0.05	0.11	0.02	0.01	0.1	0.085
12			0.01		0.05	0.13	0.02	0.01	0.12	0.105
14			0.01		0.06	0.15	0.02	0.01	0.14	0.125
16			0.01		0.065	0.165	0.02	0.01	0.16	0.145
18			0.01		0.07	0.18	0.02	0.01	0.175	0.160
20			0.01		0.075	0.2	0.02	0.01	0.195	0.180

Deflect Limit	
L/175	0.55
L/240	0.40
L/360	0.27



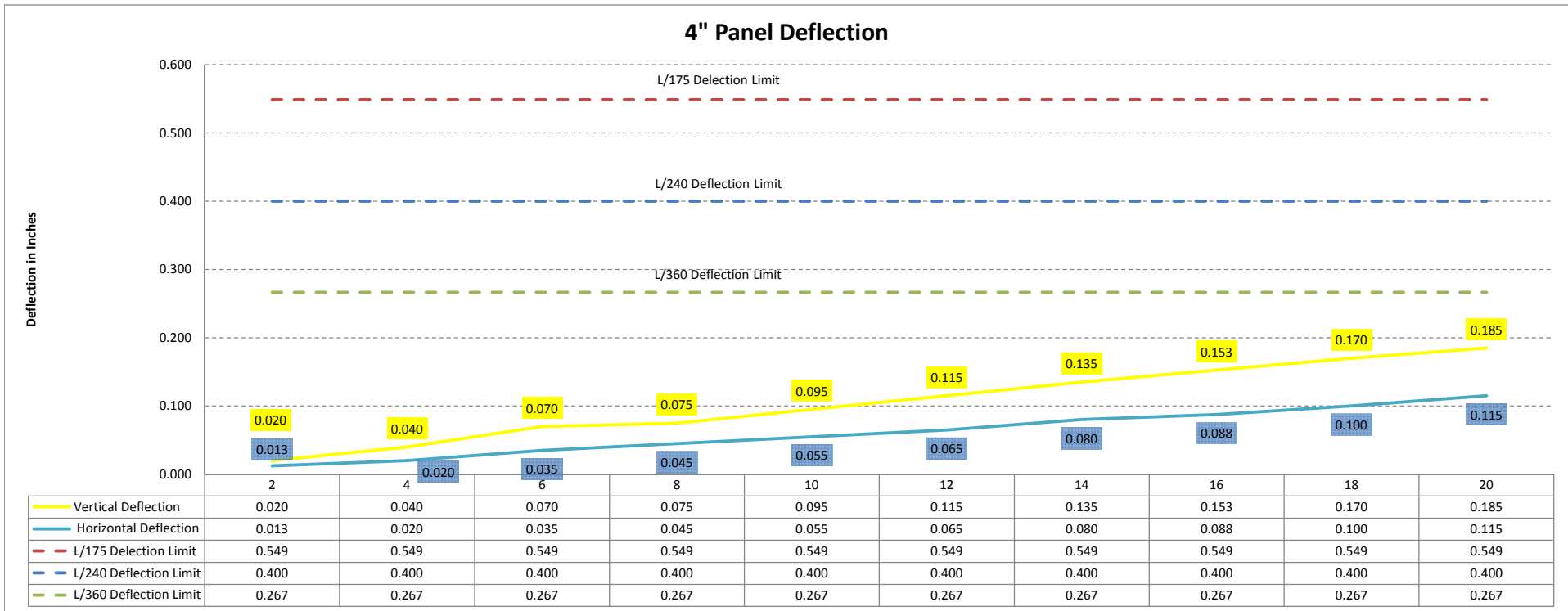
Units were tested 20 gauge galvanized skins on both sides
 Units used E-689 extrusions in mill finish
 Panels were tested at WinTech on 1-19-17

4" Panel Deflection Numbers



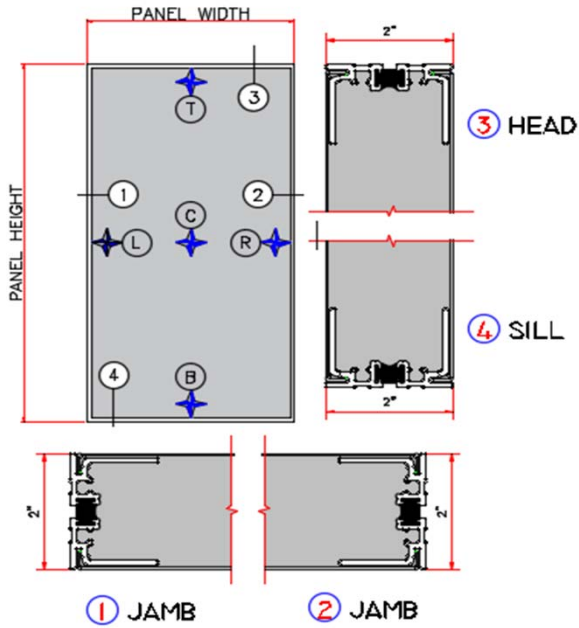
Panel Size Pressure (Inches W.C.)	Width		Height		Horizontal Deflection				Vertical Deflection
	L	C	R	T	C	B			
0									
2	0.015	0.025	0.01	0	0.02	0	0.020		
4	0.03	0.045	0.02	0	0.04	0	0.040		
6	0.04	0.07	0.03	0	0.07	0	0.070		
8	0.05	0.09	0.04	0	0.08	0.01	0.075		
10	0.06	0.11	0.05	0	0.1	0.01	0.095		
12	0.07	0.13	0.06	0	0.12	0.01	0.115		
14	0.08	0.15	0.06	0	0.14	0.01	0.135		
16	0.095	0.17	0.07	0	0.16	0.015	0.153		
18	0.1	0.19	0.08	0	0.18	0.02	0.170		
20	0.11	0.21	0.08	0	0.195	0.02	0.185		

Deflect Limit	
L/175	0.55
L/240	0.40
L/360	0.27



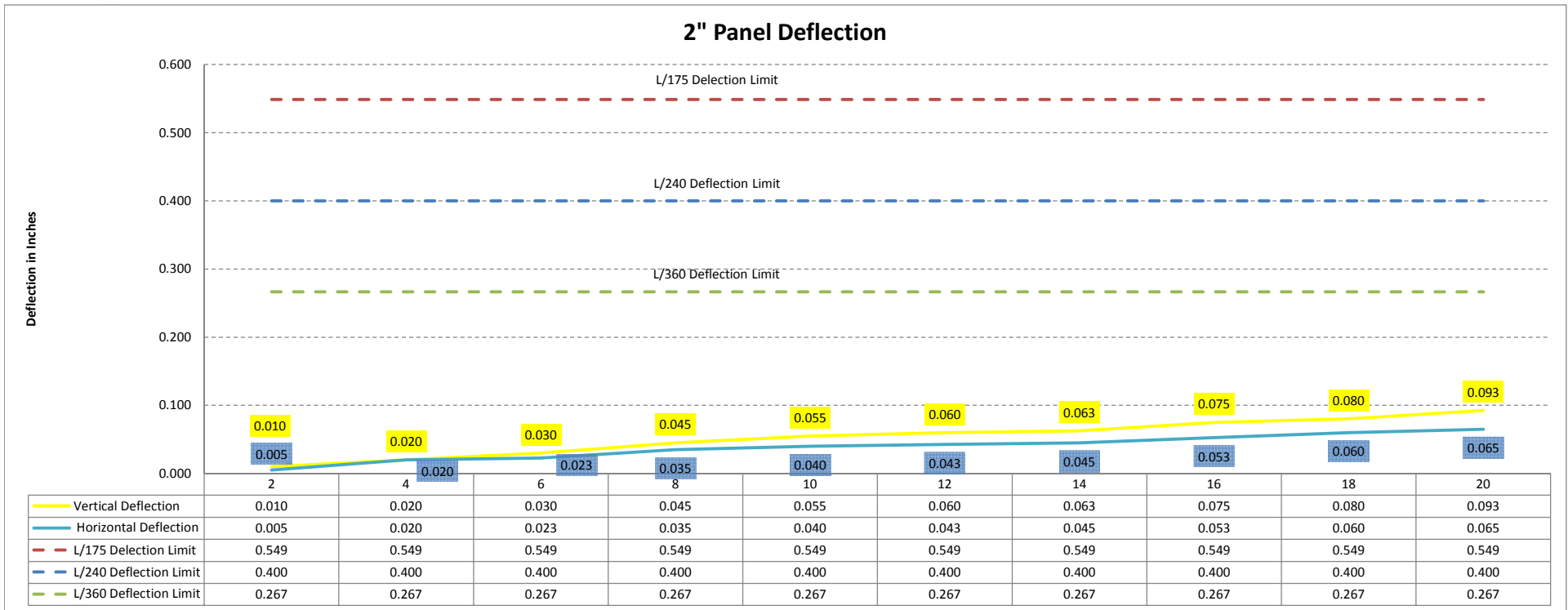
Units were tested 20 gauge galvanized skins on both sides
 Units used E-690 extrusions in mill finish
 Panels were tested at WinTech on 1-20-17

2" Panel Deflection Numbers



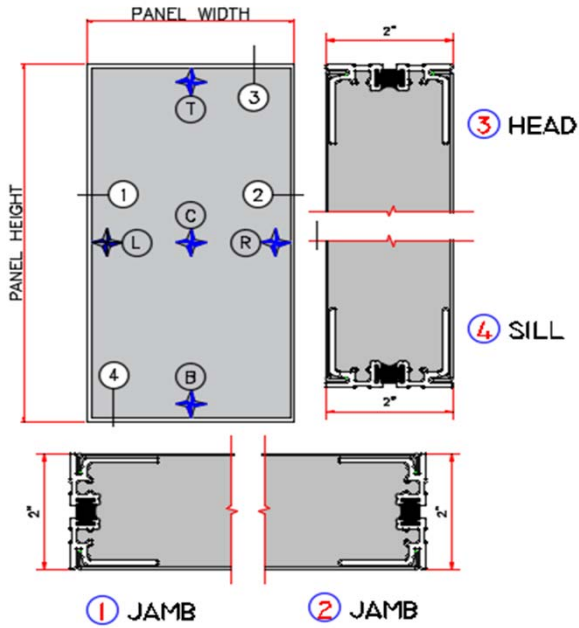
Panel Size Pressure (Inches W.C.)	Width		Height						Vertical Deflection	
	24	96	0	L	C	R	Horizontal Deflection	T		C
2	0	0.01	0.01	0.005	0	0.01	0	0.01	0	0.010
4	0	0.03	0.02	0.020	0	0.03	0	0.03	0.02	0.020
6	0.005	0.05	0.05	0.023	0	0.05	0	0.05	0.04	0.030
8	0.01	0.07	0.06	0.035	0	0.08	0	0.08	0.07	0.045
10	0.01	0.08	0.07	0.040	0	0.1	0	0.1	0.09	0.055
12	0.015	0.09	0.08	0.043	0	0.11	0	0.11	0.1	0.060
14	0.02	0.1	0.09	0.045	0	0.12	0	0.12	0.115	0.063
16	0.02	0.11	0.095	0.053	0	0.135	0	0.135	0.12	0.075
18	0.02	0.12	0.1	0.060	0	0.145	0	0.145	0.13	0.080
20	0.025	0.13	0.105	0.065	0	0.16	0	0.16	0.135	0.093

Deflect Limit	
L/175	0.55
L/240	0.40
L/360	0.27



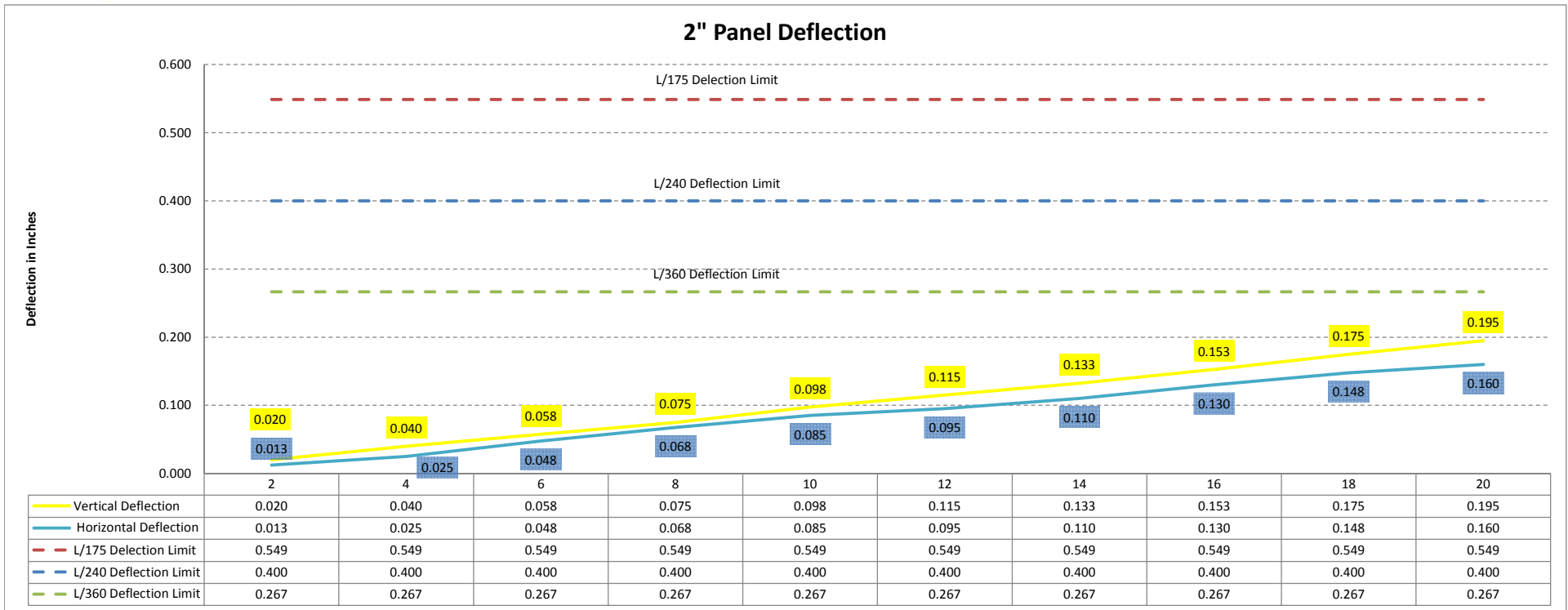
Units were tested 20 gauge galvanized skins on both sides
 Units used E-675 extrusions in mill finish
 Panels were tested at WinTech on 6-22-16 and 6-24-16

2" Panel Deflection Numbers



Panel Size Pressure (Inches W.C.)	Width		Heigh	Horizontal Deflection				Vertical Deflection
	36	96	0	L	C	T	C	
2	0.005	0.02	0.01	0.013	0	0.02	0	0.020
4	0.01	0.04	0.02	0.025	0	0.045	0.01	0.040
6	0.01	0.065	0.025	0.048	0.005	0.065	0.01	0.058
8	0.01	0.09	0.035	0.068	0.01	0.085	0.01	0.075
10	0.01	0.11	0.04	0.085	0.01	0.11	0.015	0.098
12	0.02	0.13	0.05	0.095	0.01	0.13	0.02	0.115
14	0.025	0.155	0.065	0.110	0.015	0.15	0.02	0.133
16	0.03	0.18	0.07	0.130	0.02	0.175	0.025	0.153
18	0.03	0.2	0.075	0.148	0.02	0.2	0.03	0.175
20	0.035	0.22	0.085	0.160	0.02	0.22	0.03	0.195

Deflect Limit	
L/175	0.55
L/240	0.40
L/360	0.27



Units were tested 20 gauge galvanized skins on both sides
 Units used E-675 extrusions in mill finish
 Panels were tested at WinTech on 6-22-16 and 6-24-16