

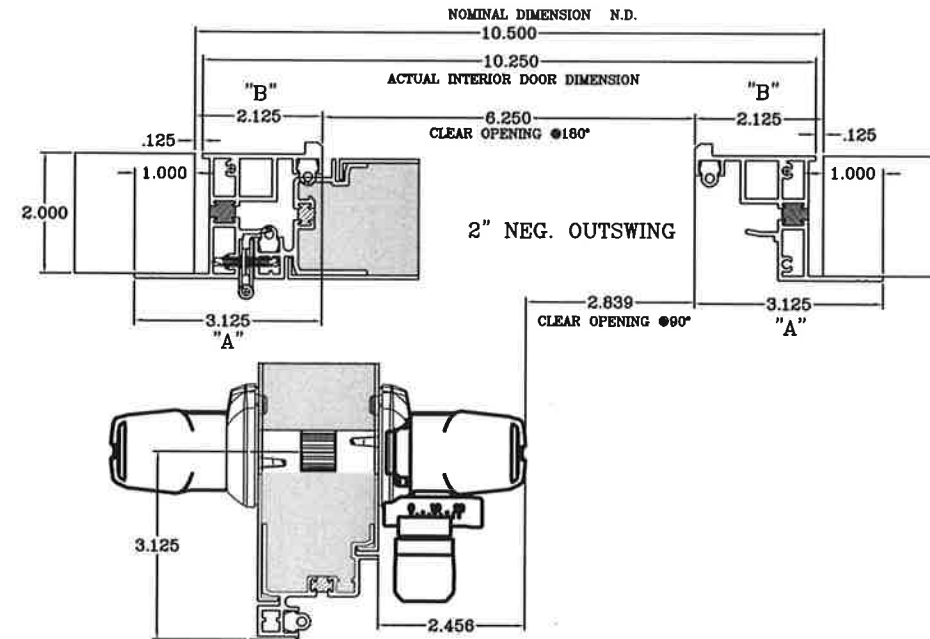
NEW SD ACCESS DOOR CLEAR OPENING FORMULAS WITH ALLEGIS K2 STYLE HARDWARE

DOOR DEPTH	"A"	"B"	"C" HNDL. HT.	CLR OPNG WIDTH/HEIGHT @ 180°	CLR OPNG WITH HNDL INCLUDED @ 90°	Min. Door Width
2" NEG. OUTSWING	3.125 X 2	2.125 X 2	2.456	N.D.-4.250	N.D.-7.661	10.500"
2" POS. INSWING	3.125 X 2	2.125 X 2	2.456	N.D.-4.250	N.D.-7.661	10.500"
3" NEG. OUTSWING	3.750 X 2	2.750 X 2	2.456	N.D.-5.500	N.D.-9.197	13.000"
3" POS. INSWING	3.750 X 2	2.750 X 2	2.456	N.D.-5.500	N.D.-9.197	13.000"
4" NEG. OUTSWING	3.750 X 2	2.750 X 2	2.456	N.D.-5.500	N.D.-10.193	15.000"
4" POS. INSWING	3.750 X 2	2.750 X 2	2.456	N.D.-5.500	N.D.-10.193	15.000"

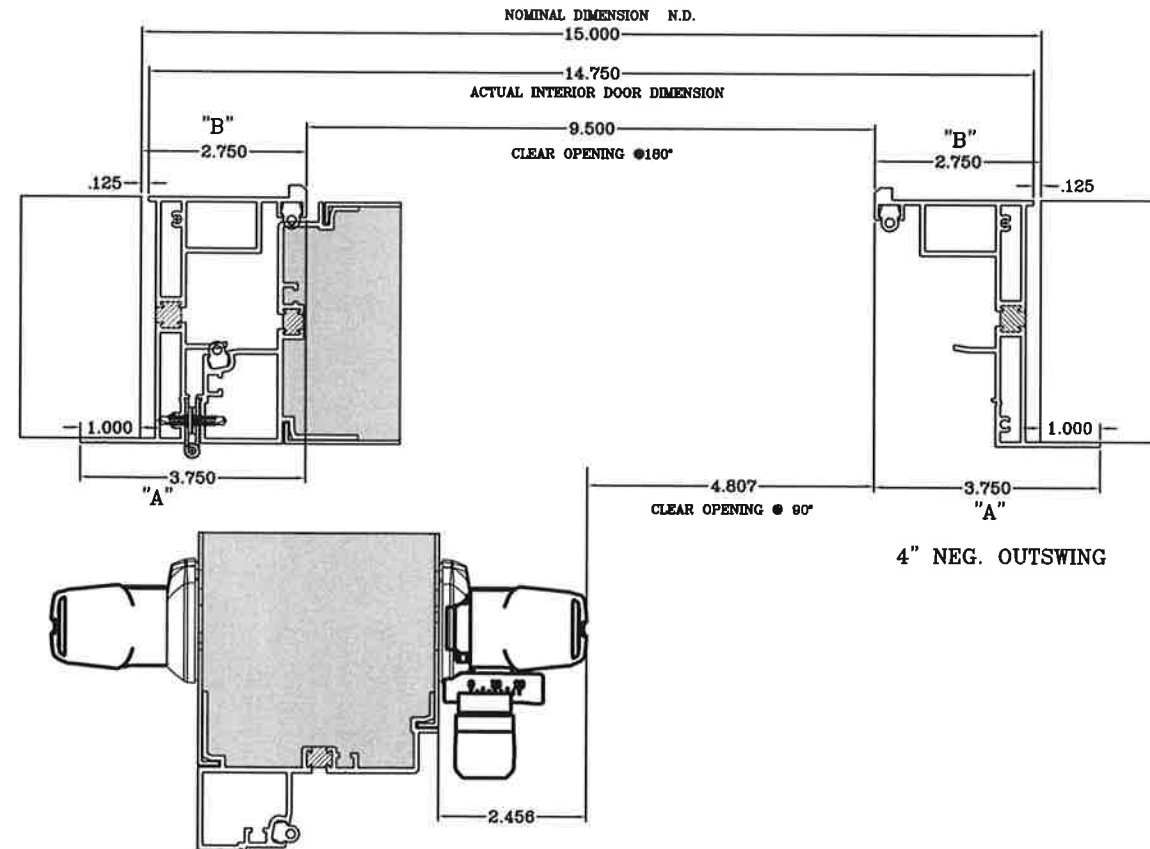
NOTE: INSWING AND OUTSWING HAVE THE SAME DEDUCTIONS.

NOTE: WHEN SELECTING A VIEW PORT WIDTH
IT MUST 4.500" NARROWER THAN THE CLEAR OPENING WIDTH @ 180°

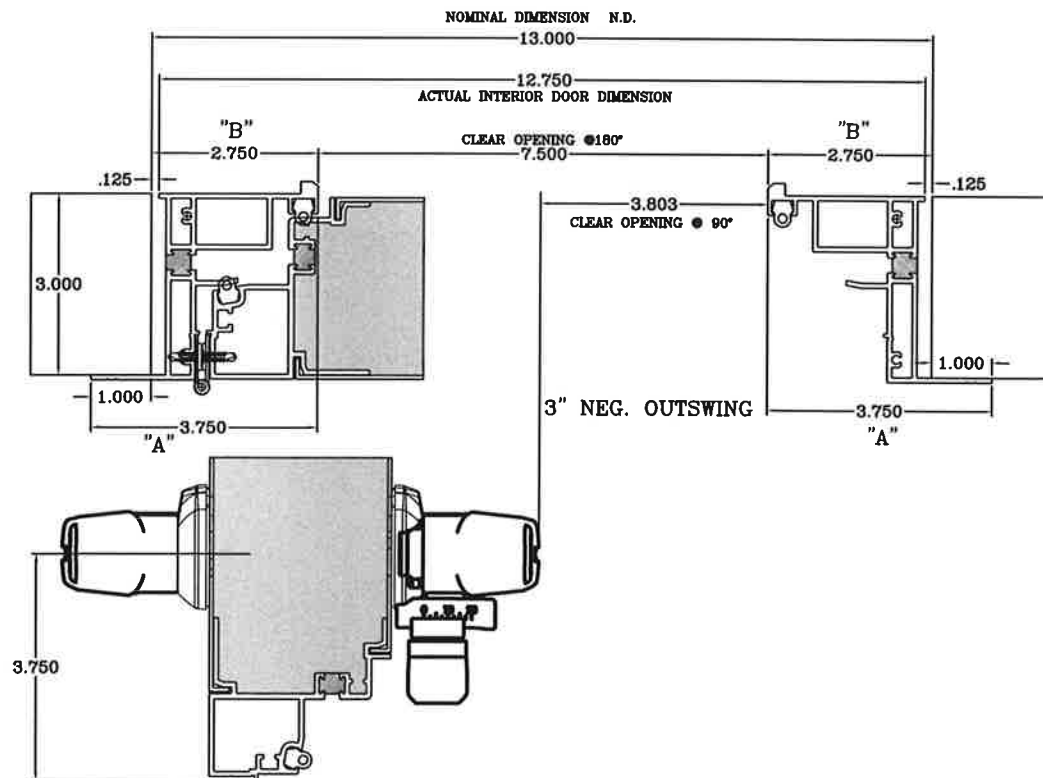
K2 hardware min cut out width is 10.500" for SD 2" door



K2 hardware min cut out width is 15" for SD 4" door



K2 hardware min cut out width is 13" for SD 3" door



©2014 WINDOW TECHNOLOGY INC. ALL RIGHTS RESERVED

DRAWN: K.B.	APPROVED:	(A)
DATE: 12-15-17	DATE:	(B)
		(C)
		(D)

WINTTECH

Window Technology, Inc.
201 Industrial Drive
Monett, MO 65708

SCALE: NOTED

DO NOT SCALE PRINT

TITLE
2" , 3" & 4" SD DOORS CLEAR OPENING WITH K2 HARDWARE

NO.

REV